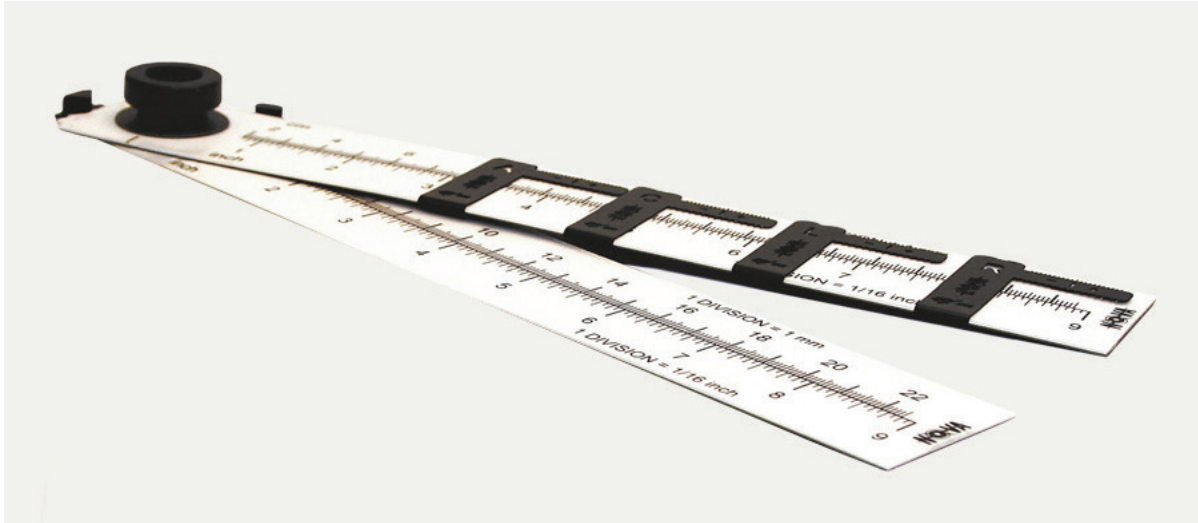


Nova Rad Ruler Set Fast and Accurate X-Ray/Light Field Check

Part Number: 99-9999



Introduction

When x-rays hit the surface of the Nova Rad, it lights up very brightly. However, the Nova Rad is much more than a fluorescent screen; it is a complete solution which allows you to check the extension of the light field as well as the x-ray field.

This set includes two rulers, each capable of measuring up to 225 mm (9 in.). Nova Rad will work on all types of x-ray machines - both digital and analog - even on mammography. It is also in accordance with international standards. Nova Rad is able to handle the applications related to installation, service, acceptance testing, and quality assurance of all x-ray equipment.

When the x-ray field is larger than the detector, this introduces an unnecessary patient dose. In order to verify that the radiation really hits the patient where it is supposed to, it is important to check that the set light field matches the x-ray field. This is one of the most common and important tests performed on x-ray units and is included in international standards for Diagnostic Constancy and Acceptance testing covering Radiography, Fluoroscopy, Mammography, and CT.

Specifications

SET INCLUDES:

- 2 rulers, each measures up to 225 mm (9 in.)
- 2 orientation markers enabling the orientation of the device to be seen in an x-ray image
- 1 suction cup for attachment to a flat surface

MAX FIELD SIZE: 450 mm (18 in.)

RESOLUTION: < 1 mm

CUPPER SCALE: Built-in for visibility on x-ray image

WEIGHT: 90 g (3.2 oz)